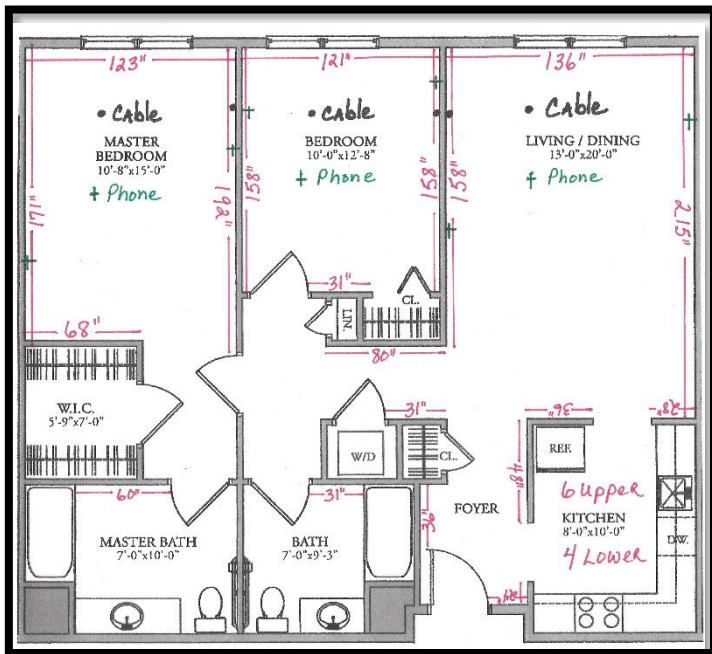
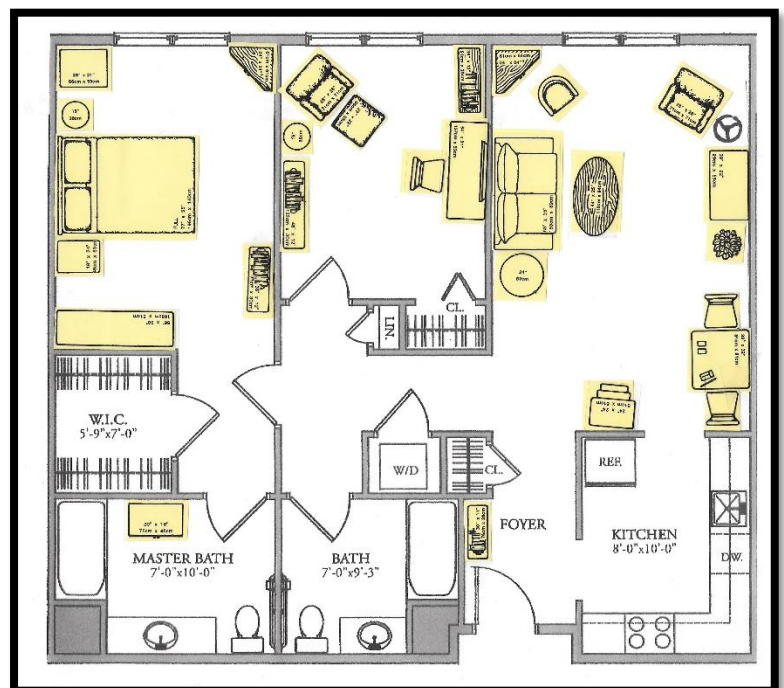


# Layout and Floor Plan



*We measure every space and document outlets and cables*

*We create a design with your furniture in mind!*



**\$200 - \$300 -Floor Plan-**

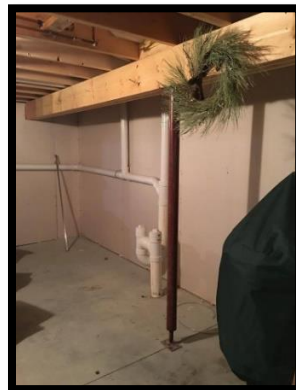
# Sorting & Downsizing



## *Before*



## *After*



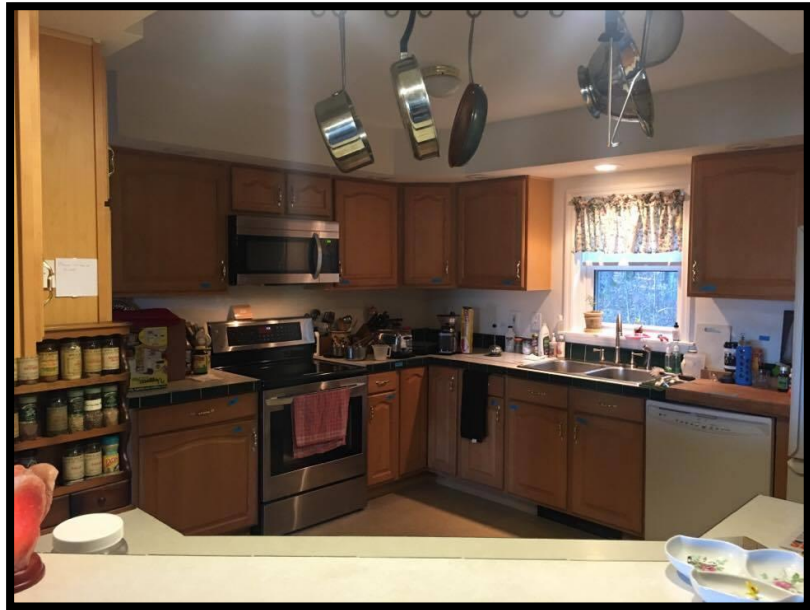
**\$350 - \$450 Each Day -Downsizing-**

4-5 Hours with 2 People

# Pack Up Day



*Start of  
the day...*



*All packed up!*

**\$800 - \$1,200 -Pack Day-**

4-6 Hours – Team packs all non-essential items

# Move Day



*Begins at  
8:00am*



*5:00pm and Ready to Live!*

**\$1,000 - \$1,500 -Move Day-**

Team Oversees Entire Move and Set Up